

MULTI RADIO MOUNT

ONLY FITS
ERICSSON EQUIPMENT

THE MULTI RADIO MOUNT

Is designed for installation of up to three Ericsson rru's on wall or vertical structures.

FLEXIBILITY

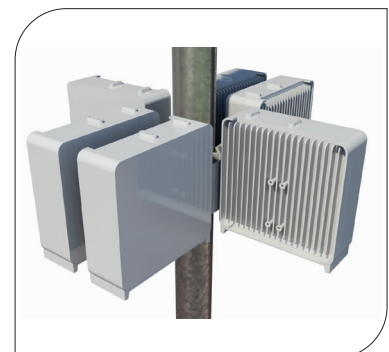
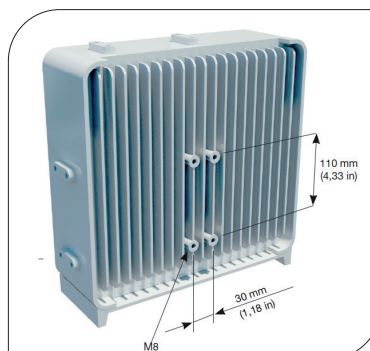
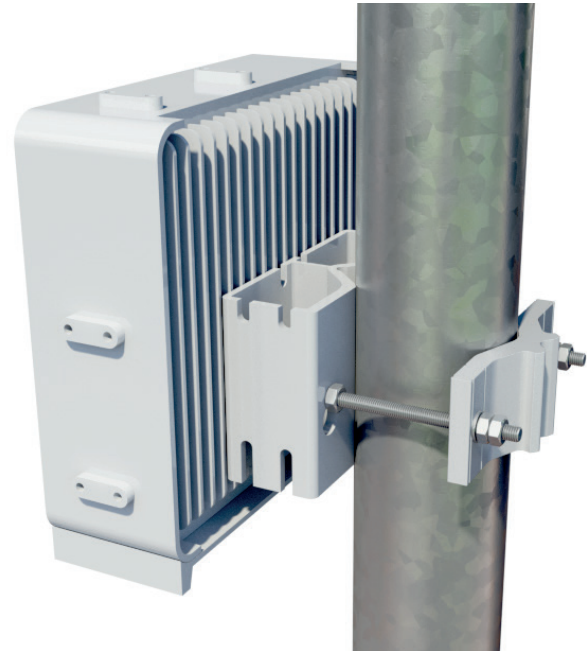
The Multi radio Mount fits all common units in Ericssons radio family and other units that have the hole pattern shown below. Due to its design the Multi Radio Mount has mounting options on 3 sides, just like the radio unit has. This gives a tremendous number of installation possibilities which can be good in case there is lack of space.

QUALITY

All components are made of anodized aluminum or acid proof stainless steel which gives the support excellent corrosion resistance.

EASY ASSEMBLY

Handling and installation is extremely easy thanks to its design with "hook on" attachments and also due to the light weight of material. The attached drill template further simplifies installation.



ORDER AND TECHNICAL INFORMATION

DRAWING NO:	CD 991090			
FUNCTION DESCRIPTION:	Multi Radio Mount for installation of up to three Ericsson RRU's on wall or vertical structures. Fits all common units in Ericsson radio family and other units that utilizes the same hole patterns.			
MOUNTING SPAN	TUBES	SQUARE PROFILES	90° ANGLE	60° ANGLE
	○	□	∨	∨
Minimum:	Ø25 mm (1,0 in)	35 x 35 mm (1,4 x 1,4 in)	35 x 35 mm (1,4 x 1,4 in)	40 mm opening (1,6 in opening)
Maximum:	Ø120 mm (4,7 in)	90 x 90 mm (3,5 x 3,5 in)	90 x 90 mm (3,5 x 3,5 in)	100 mm opening (4,0 in opening)
MECHANICAL DATA				
Clamp profiles:	Aluminum, nature anodized 20µm			
Fasteners:	Acid proof stainless steel			
PACKAGE DIMENSIONS	LENGTH	WIDTH	HEIGHT	WEIGHT
	286 mm (11,2 in)	188 mm (7,4 in)	80 mm (3,1 in)	1,8 kg (4,0 lb)

NOTE! 4 pcs of M8 bolts for one RRU is included in the Multi Radio Mount. When installing 2 or 3 units extra bolt kit needs to be ordered separately.

Quality Design